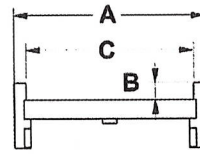
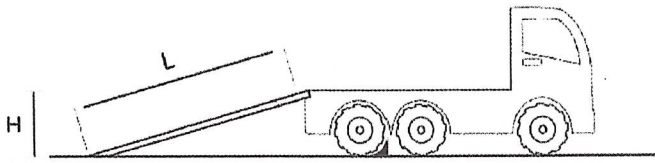
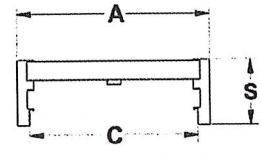


# 95mm

MONTANTE (S) / SUPPORT (S) / HALTERUNG (S)

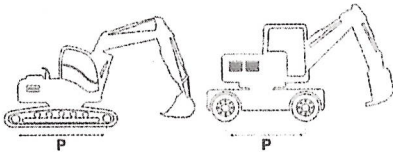


Tipo / Type / Typ  
10 - 11



Tipo / Type / Typ  
00 - 01

## MONTANTE (S) 95 mm / SUPPORT (S) 95 mm / HALTERUNG (S) 95 mm

CODICE PART NUMBER ARTIKELNUMMER	L (mm) LUNGHEZZA LENGTH LÄNGE	PESO (Kg/coppia) WEIGHT (Kg/pair) GEWICHT (Kg/Paar)	P (mm) = passo / axle distance / Radstand			C (mm) LARGH. INTERNA INTERNAL WIDTH INNERE BREITE	A (mm) LARGH. ESTERNA EXTERNAL WIDTH ÄUSSERE BREITE	B (mm) ALTEZZA BORDO CURBS THICK. RANDHÖHE
			 Portata max alla coppia (Kg) Max machine weight calculated on a ramp pair (Kg) Max. Tragfähigkeit des Paares (Kg)					
<b>VERSIONE CON BORDO / CURBS TYPE / VERSION MIT RAND - [TIPO / TYPE / TYP 10]</b>								
			1000	1250	1500			
UELO925S10	2,500	41	2900	3000	3000	300	352	28
UELO930S10	3,000	45	2170	2500	2900	300	352	28
UELO932S10	3,200	47	1935	2230	2560	300	352	28
UELO935S10	3,500	49	1700	1930	2170	300	352	28
UELO940S10	4,000	53	1450	1580	1700	300	352	28
<b>VERSIONE SENZA BORDO / NO CURBS TYPE / VERSION OHNE RAND - [TIPO / TYPE / TYP 00]</b>								
			1000	1250	1500			
UELO925S00	2,500	41	2900	3000	3000	-	352	-
UELO930S00	3,000	45	2170	2500	2900	-	352	-
UELO932S00	3,200	47	1935	2230	2560	-	352	-
UELO935S00	3,500	49	1700	1930	2170	-	352	-
UELO940S00	4,000	53	1450	1580	1700	-	352	-