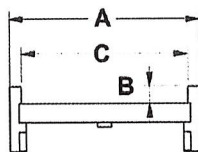
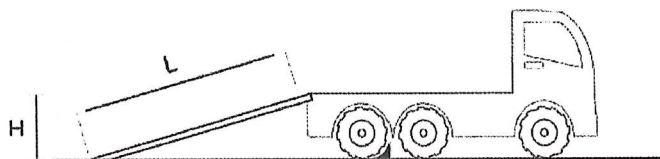
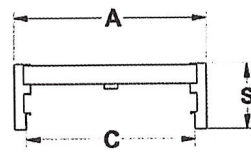


127mm

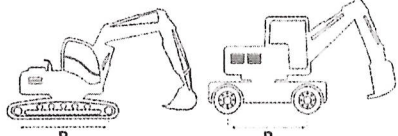
MONTANTE (S) / SUPPORT (S) / HALTERUNG (S)



Tipo / Type / Typ
10 - 11



Tipo / Type / Typ
00 - 01

MONTANTE (S) 127 mm / SUPPORT (S) 127 mm / HALTERUNG (S) 127 mm								
CODICE PART NUMBER ARTIKELNUMMER	L (mm) LUNGHEZZA LENGTH LÄNGE	PESO (Kg/coppia) WEIGHT (Kg/pair) GEWICHT (Kg/Paar)	P (mm) = passo / axle distance / Radstand  Portata max alla coppia (Kg) Max machine weight calculated on a ramp pair (Kg) Max. Tragfähigkeit des Pairs (Kg)			C (mm) LARGH. INTERNA INTERNAL WIDTH INNERE BREITE	A (mm) LARGH. ESTERNA EXTERNAL WIDTH ÄUSSERE BREITE	B (mm) ALTEZZA BORDO CURBS THICK. RANDHÖHE
VERSIONE CON BORDO / CURBS TYPE / VERSION MIT RAND - [TIPO / TYPE / TYP 10]								
			1000	1500	2000			
UEL1230S10A	3000	56	3630	4630	4900	320	372	45
UEL1232S10A	3200	58	3280	4090	4560	320	372	45
UEL1235S10A	3500	64	2860	3470	4120	320	372	45
UEL1240S10A	4000	71	2350	2770	3310	320	372	45
UEL1230L10A	3000	60	3630	4350	4350	350	402	45
UEL1232L10A	3200	62	3280	4090	4350	350	402	45
UEL1235L10A	3500	66	2850	3450	4100	350	402	45
UEL1240L10A	4000	74	2350	2760	3310	350	402	45
VERSIONE SENZA BORDO / NO CURBS TYPE / VERSION OHNE RAND - [TIPO / TYPE / TYP 00]								
			1000	1500	2000			
UEL1230S00A	3000	56	3630	4630	4900	-	372	-
UEL1232S00A	3200	58	3280	4090	4560	-	372	-
UEL1235S00A	3500	64	2860	3470	4120	-	372	-
UEL1240S00A	4000	71	2350	2770	3310	-	372	-
UEL1230L00A	3000	60	3630	4350	4350	-	402	-
UEL1232L00A	3200	62	3280	4090	4350	-	402	-
UEL1235L00A	3500	66	2850	3450	4100	-	402	-
UEL1240L00A	4000	74	2350	2760	3310	-	402	-

Possibilità di montare la gomma su richiesta.
Possibility to get the ramp with rubber, on request.
Möglichkeit, die Rampe mit Gummi zu bekommen, auf Anfrage.